

PathScope

High resolution OCT for ex-vivo tissue

Product Description

Optical Coherence Tomography, better known as OCT, uses light to provide cross-sectional images of micro-layers of tissues and other samples. OCT is a valuable bench tool for Pathologists who want to work smarter and more efficiently with their histological sections. The PathScope system allows for multi-scale lateral resolution and field of view, which helps you more thoroughly explore your ex-vivo samples. Saves time by helping you select fewer, more targeted histological sections.



Specifications

Image Size	512px x 512px
Depth Resolution	4.5µm in air, 3µm in tissue
Transverse Resolution	4x: 10µm, 10x: 5µm 40x: 2µm
Scan Range	4x: 5mm, 10x: 2.5mm 40x: 1mm
A-Scan Line Range	8,800/sec
B-Scan Image Range	12/sec
Center Wavelength	880nm
Sensitivity (OSNR)	100 dB
Output Power	750 µW
System Size (inches)	13w x 7.5d x 6h
Scanner Size (inches)	4.5w x 2.5d x 1.9h
System Weight	6 lbs.

Features

- Affordable
- Accurate
- Compact
- Easy to use
- Widely compatible

Applications

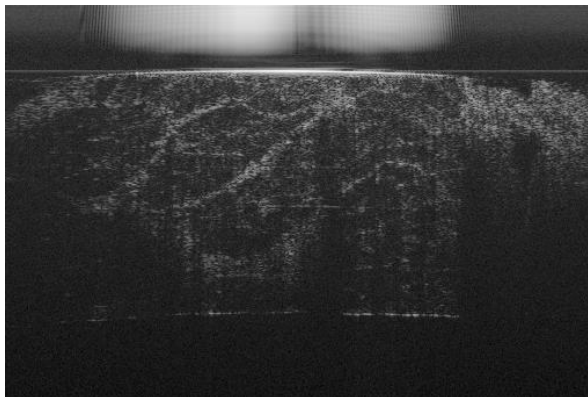
- Imaging tissue

PathScope

High resolution OCT for ex-vivo tissue

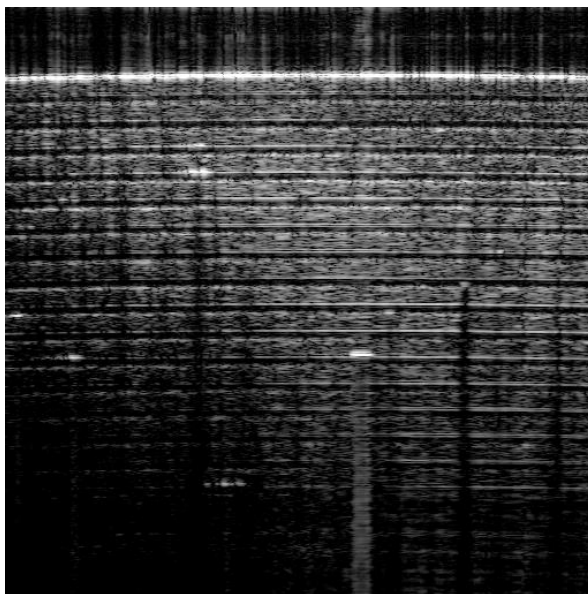
Example I:

Bacon



Example II:

Scotch tape



Ordering Information

P/N: POPS-880

*Product dimensions may change without notice. This is sometimes required for non-standard specifications.