



15 Presidential Way, Woburn, MA 01801
Tel: 781-935-1200 Fax: 781-935-2040
www.agiltron.com

User Manual

1550nm DFB laser, 20mW, 5kHz linewidth

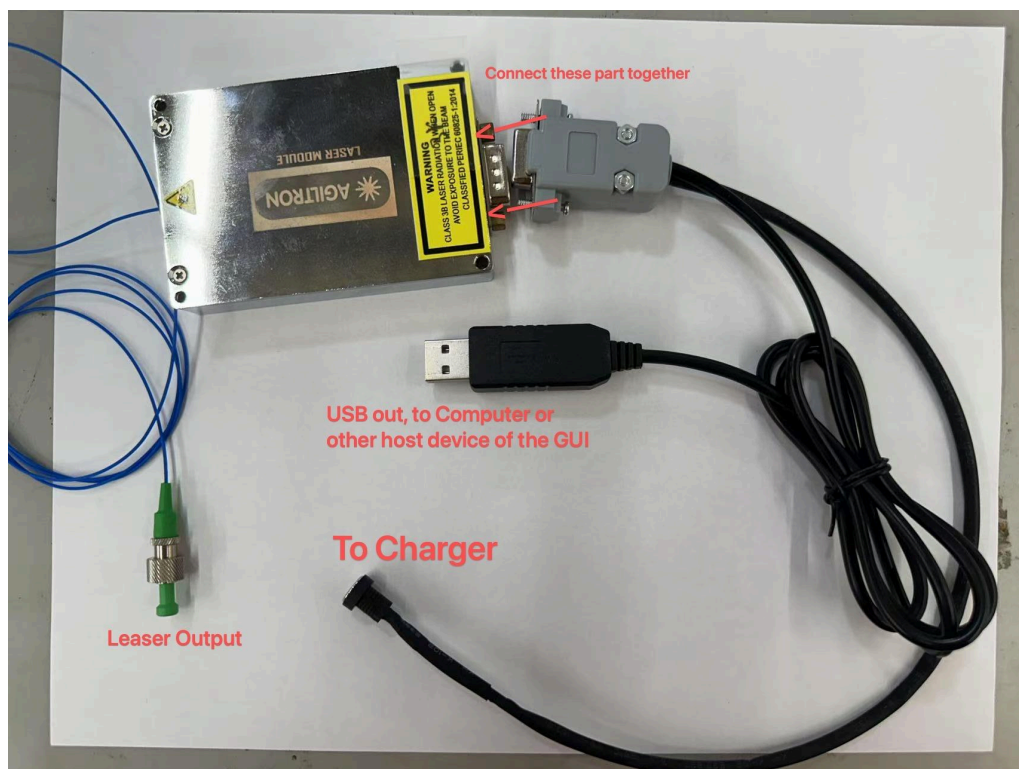
Warning:

When the Laser is connected and there is sufficient input current to the input port of this device its output will be on at the power level previously set at the factory. This power level can be changed through the provided GUI. (it will be the last current corresponding power that was set.)

Warning:

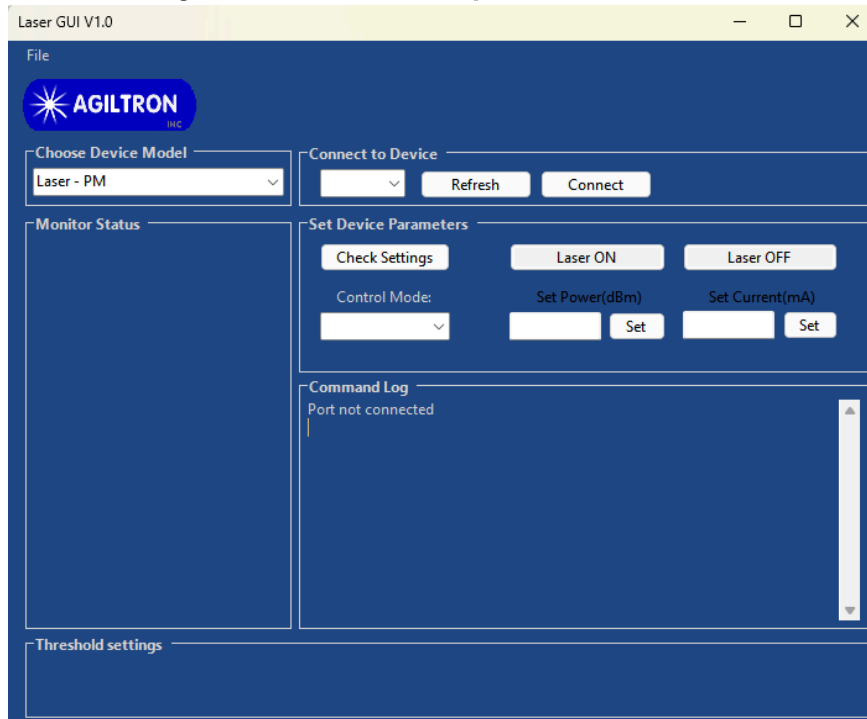
All fiber connectors need to be cleaned and inspected before connecting them to the input and output of the amplifier. Fail to do so might cause poor performance of amplifier, severe damage to fiber and even amplifier.

Connection:

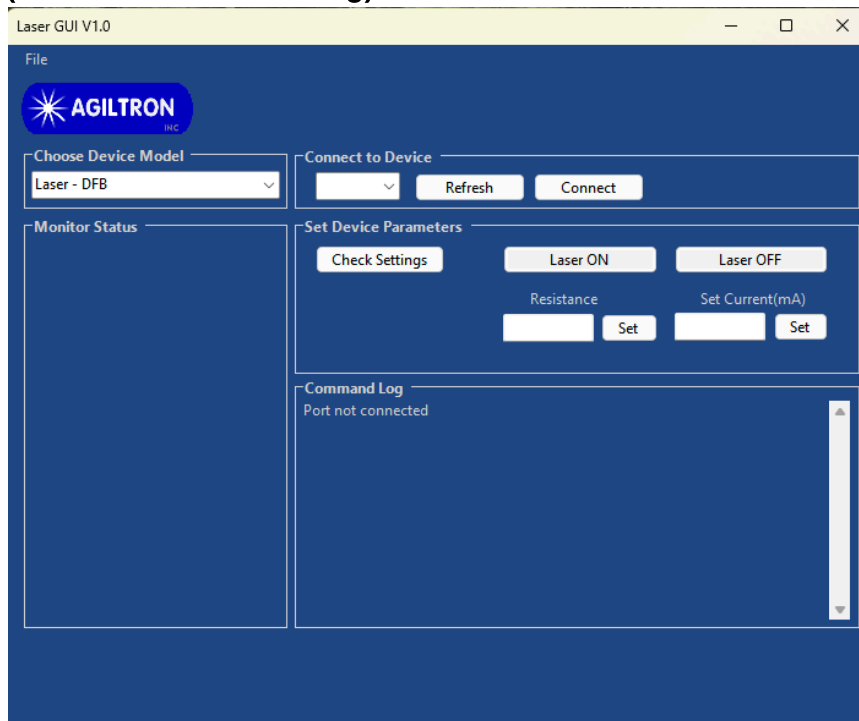


Software Instruction:

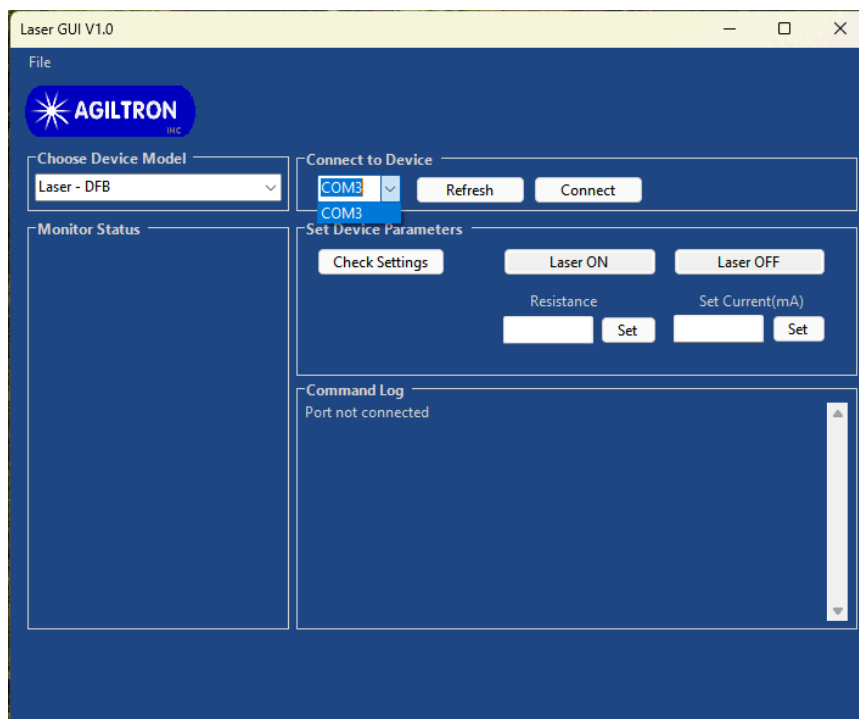
1. Download GUI software 'Laser GUI' from the link below, under Other Download. <https://agiltron.com/dlc/software/Laser%20GUI.zip>
2. Unzip the file "Laser GUI" to install the GUI on the host computer.
3. Connect the device following the last section to power the unit and connect the com control.
4. Run Laser GUI.
5. The following screen should be open.



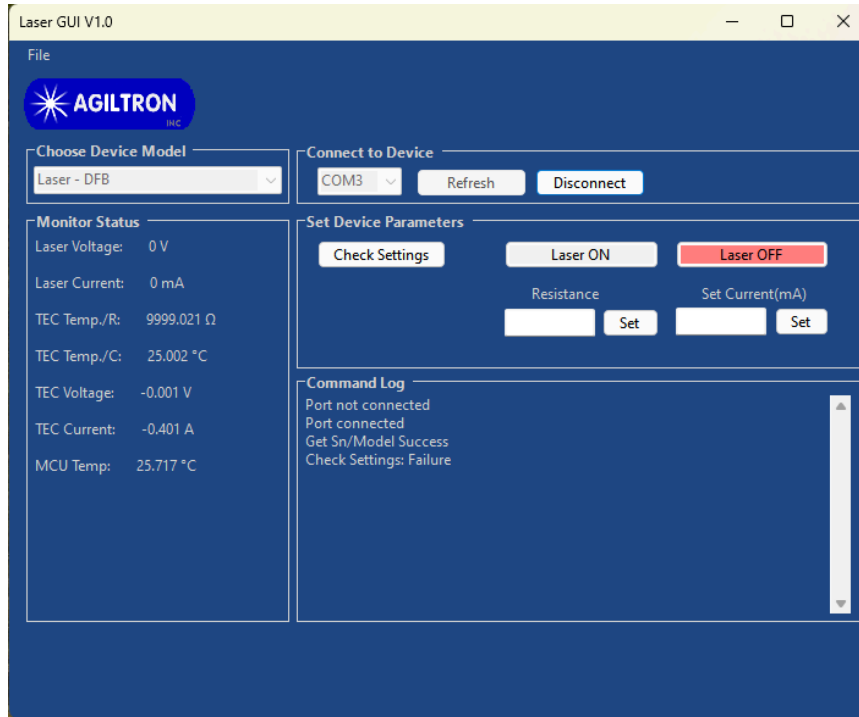
- Under “Choose Device Model” choose Laser DFB, instead of Laser- PM (Which is the auto setting)



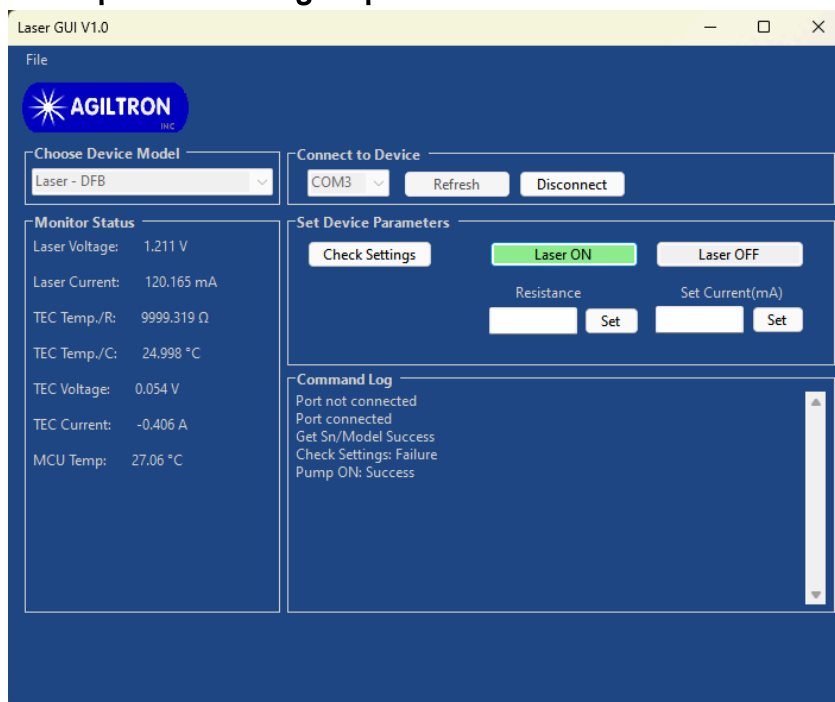
- Under the ‘Connect to Device’ choose the device that needs to be connected, ideally it will be “COM3” but it may be different based on your device.



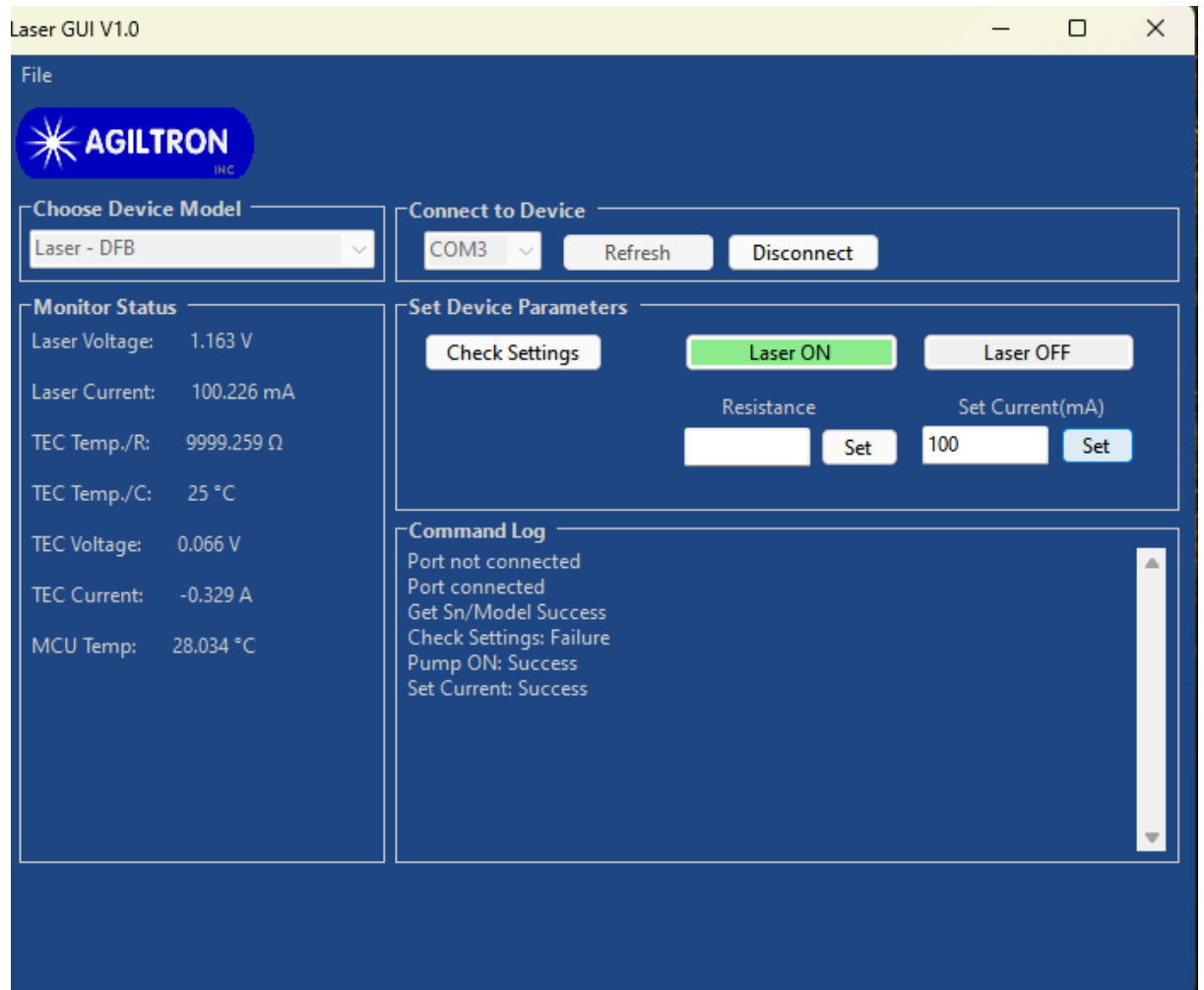
8. The Laser unit recorded the previous state set by the GUI. If it was set to be “Laser OFF” last run, it will show the following screen, with the “Laser OFF” button showing red. Press the “Laser ON” button to turn on the Laser.



9. Alternatively, if the last run sets the unit to be on, the following screen will show up without doing step 8. The button “Laser On” will be Green.

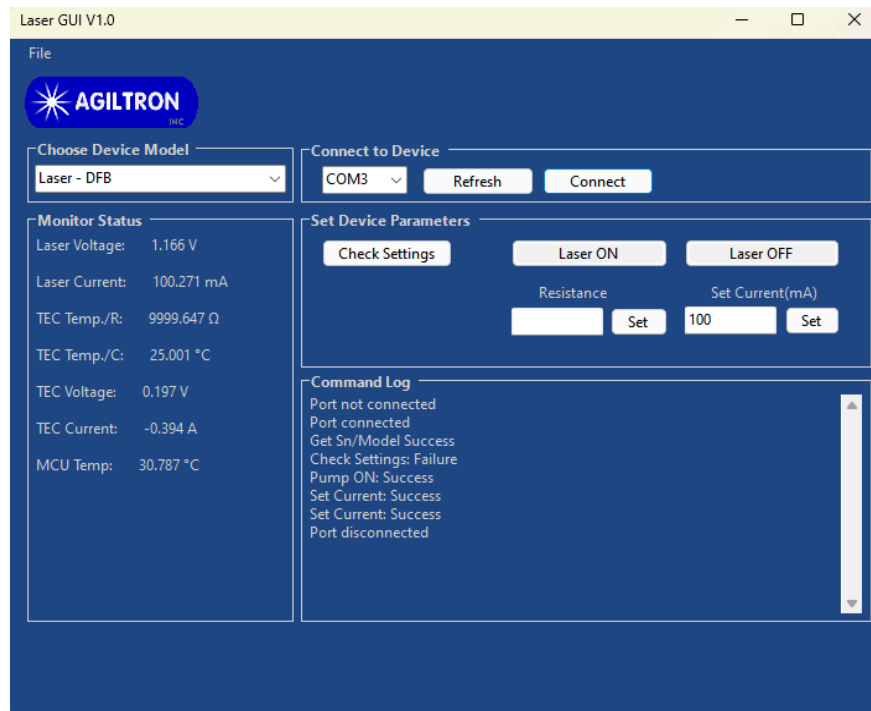


10. Set input current using “Set Current(mA)”, type in the needed current under “Set Current(mA)” and then hit set to input the setting. See the image below for an example to set the device to run with an input current of 100mA.



11. Alternatively, resistance can be changed. Input a number under the “Resistance” then hit set will change the Resistance. The resistance was set to be around 10000 ohms, to keep the unit running under a safe temperature.

12. When done with all the settings hit the “disconnect” button to disconnect the unit and GUI.



13. Close the software.

Use without GUI:

Connect the device based on the following image. Use the charger instead of the host device to power the unit.



Running behavior of the unit:

The GUI sets the running current and resistance of the GUI, and without further input, the device will keep the setting of the previous input.

Example:

The device is connected to power and running with a power input of 100mA. The unit then connects with the GUI and its host device. Using the GUI, the power input is changed to 150mA, then the GUI disconnected with the unit, and powered off. One day later, the Laser unit is connected to the charger and powered. The laser will be running with 150mA.