

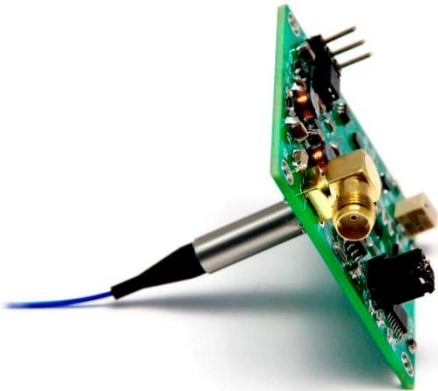
Low-Noise Amplifier for Si and GaAs PIN Photodiode



For all types, silicon, InGaAs, Germanium, up to 600 MHz, Gain Switchable

DATASHEET

[Return to the Webpage](#)



Features

- Wide Range -60-3dBm
- USB Digital Output
- 0-5V Analog Output
- Mountable on PCB

Applications

- Optical System
- Lab Use
- Instruments

This optical detector amplifier is designed as a generic daughterboard for integration into custom systems. It can be used as an optical power meter or mounted on a custom PCB as part of the system. The amplifier's gain can be varied by a turning pot in 10dB steps. Customers can select a cost-effective detector for performance verification.

Custom can purchase a detector from our web to be mounted onto this amplifier. We will test and supply the report.

Due to their high sensitivity to electrostatic discharge, warranty coverage applies only to fully metal covered modules the benchtops, which include proper protection. Other versions of the lasers and photodetectors are not covered by any warranty. Please use them with great caution.

Specifications

Parameter	Min	Typical	Max	Unit
Measured Range	-60		3	dBm
Wavelength ^[1]	200		2500	nm
Response Speed ^[2]	0	50	600	MHz
Resolution	0.1			%
Noise (rms)		50		μV
Repeatability		0.1		dB
Output Resistance		50		Ω
DC Power		± 12		V
Analog Signal Output	0		5	V
Output Connector Type		SAM		
Operating Temperature	-14		60	°C
Storage Temperature	-40		85	°C
Enclosure	Available			

Notes:

- [1] The wavelength response is related to detector selection
- [2] The response speed is related to detector active area, the smaller the faster

Warning: The device is extremely ESD-sensitive. Its dark current increases by unprotected handling. It is recommended to be handled under a certified ion fan once the package is removed.

Legal notices: All product information is believed to be accurate and is subject to change without notice. Information contained herein shall legally bind Agiltron only if it is specifically incorporated into the terms and conditions of a sales agreement. Some specific combinations of options may not be available. The user assumes all risks and liability whatsoever in connection with the use of a product or its application.

Rev 12/30/25

[+1 781-935-1200](tel:+17819351200)

sales@agiltron.com

www.agiltron.com

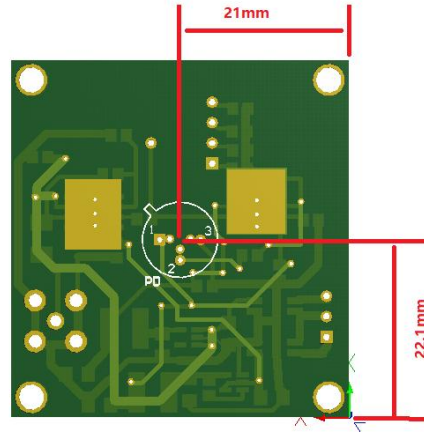
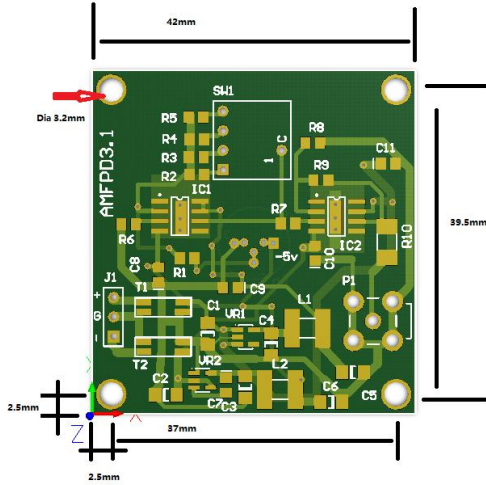
Low-Noise Amplifier for Si and GaAs PIN Photodiode



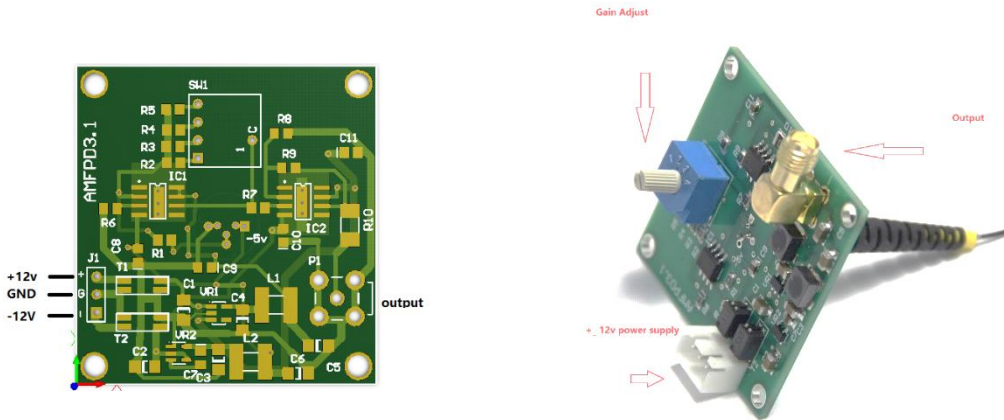
For all types, silicon, InGaAs, Germanium, up to 600 MHz, Gain Switchable

DATASHEET

Mechanical Dimensions (mm)



Operation Instruction



- Connect a photodetector according to the table
- Connect a $\pm 12V$ power supply to J1 using accompanied connector. When the power is on, a LED will light up. Recommended power supply: Globtek GT-51084-12N12. We offer this for purchase
- Connect output using a 50 Ω coax cable with SAM male connector
- Apply a light source to the detector and adjust gain to the desire setting from 10 to 70dB by 10dB steps

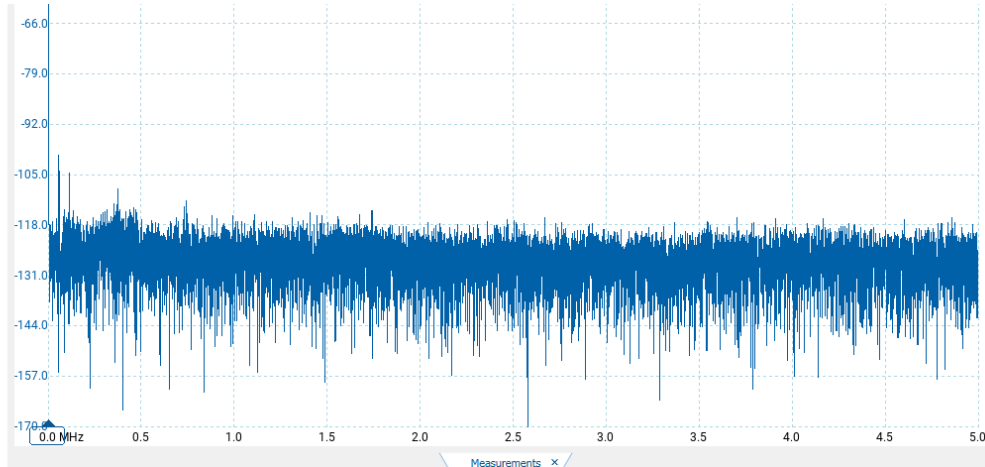
Low-Noise Amplifier for Si and GaAs PIN Photodiode



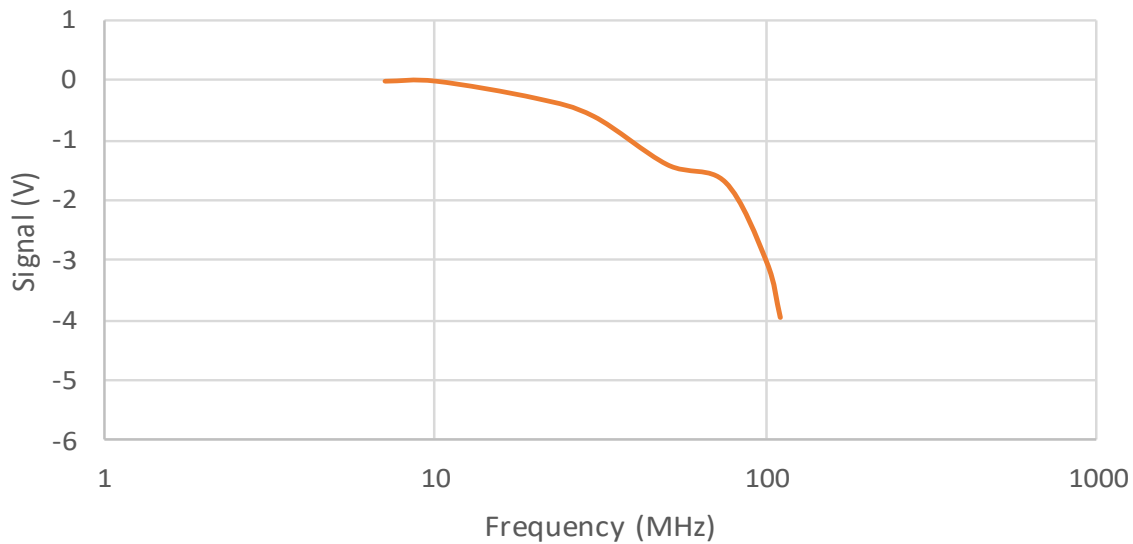
For all types, silicon, InGaAs, Germanium, up to 600 MHz, Gain Switchable

DATASHEET

Noise (<100dB)



Frequency Response



Ordering Information (Part Number)

	1 1	<input type="checkbox"/>	<input type="checkbox"/>	<input type="checkbox"/>	<input type="checkbox"/>	<input type="checkbox"/>	<input type="checkbox"/>	1
Prefix	Type	Detector Type	Detector Mounted	Speed	Grade	Package	Power Supply	
DETA-		None = A Free Space = 1 SM Fiber Coupled = 2 MM Fiber Coupled = 3 Special = 0	None = N 300-1100nm = 1 900-1650nm = 2 1000-1950nm = 3 1000-2400nm = 4 220-280nm = 5 Special = 0	10MHz = 1 50MHz = 2 100MHz = 3 200MHz = 4 250MHz = 5 600MHz = 6 Special = 0	Regular = 1	Regular = 1 Special = 0	None = 1 Included = 2	

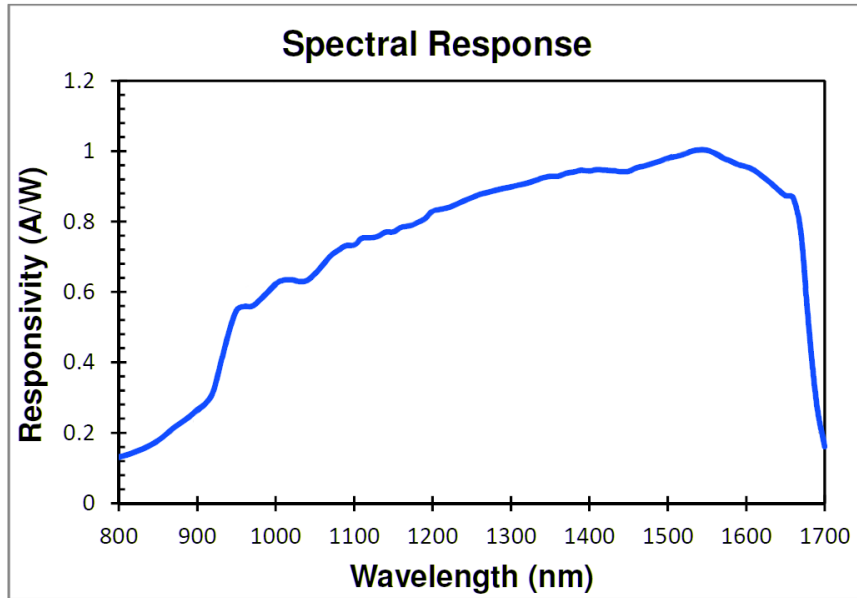
Low-Noise Amplifier for Si and GaAs PIN Photodiode



For all types, silicon, InGaAs, Germanium, up to 600 MHz, Gain Switchable

DATASHEET

Spectral Response



Application Notes

Fiber Core Alignment

Note that the minimum attenuation for these devices depends on excellent core-to-core alignment when the connectors are mated. This is crucial for shorter wavelengths with smaller fiber core diameters that can increase the loss of many decibels above the specification if they are not perfectly aligned. Different vendors' connectors may not mate well with each other, especially for angled APC.

Fiber Cleanliness

Fibers with smaller core diameters (<5 μm) must be kept extremely clean, contamination at fiber-fiber interfaces, combined with the high optical power density, can lead to significant optical damage. This type of damage usually requires re-polishing or replacement of the connector.

Maximum Optical Input Power

Due to their small fiber core diameters for short wavelength and high photon energies, the damage thresholds for device is substantially reduced than the common 1550nm fiber. To avoid damage to the exposed fiber end faces and internal components, the optical input power should never exceed 20 mW for wavelengths shorter 650nm. We produce a special version to increase the handling by expanding the core side at the fiber ends.

Low-Noise Amplifier for Si and GaAs PIN Photodiode



For all types, silicon, InGaAs, Germanium, up to 600 MHz, Gain Switchable

DATASHEET

Caution Electrostatic Sensitivity



- Never touch laser diode and the module using hands
- Always use protections when handle a laser diode
- Recommend mounting the laser diode using an ionic gun and ESD finger cots



Laser Safety

This product meets the appropriate standard in Title 21 of the Code of Federal Regulations (CFR). FDA/CDRH Class 1M laser product. This device has been classified with the FDA/CDRH under accession number 0220191. All versions of this laser are Class 1M laser products, tested according to IEC 60825-1:2007 / EN 60825-1:2007. An additional warning for Class 1M laser products. For diverging beams, this warning shall state that viewing the laser output with certain optical instruments (for example eye loupes, magnifiers, and microscopes) within a distance of 100 mm may pose an eye hazard. For collimated beams, this warning shall state that viewing the laser output with certain instruments designed for use at a distance (for example telescopes and binoculars) may pose an eye hazard.

Wavelength = 1.3/1.5 μm .

Maximum power = 30 mW.



*Caution - Use of controls or adjustments or performance of procedures other than those specified herein may result in hazardous radiation exposure.

*IEC is a registered trademark of the International Electrotechnical Commission.