

Mini 980/1060 Optical Isolator (Reflection)

(patents pending)

Product Description

The OIST Series Optical Isolator is a passive device that guides lights at 980/1060 nm in the normal direction while minimizing back reflection and back scattering in the reverse direction for any state of polarization. With Agiltron's proprietary magnetic-optics technology and proven advanced micro optics design, it features low insertion loss, high isolation, compact structure, high power handling, and high stability. The excellent characteristics of this product make it an ideal choice for application in fiber amplifier systems, pump laser diodes, and optical fiber sensors. Agiltron's unique reflection design features compact packaging size with both input and output fibers on the same side of the device, which is extremely convenient for fiber routing in applications that require the smallest installation footprint.



Performance Specifications

Parameters	Min	Typical	Max	Unit
Operation Wavelength	980	970	990	nm
	1060	1050	1070	
Insertion Loss ¹		1.0	1.5	dB
Wavelength Dependent Loss			0.2	dB
Isolation	25	28		
Polarization Dependent Loss		0.1	0.2	dB
Polarization Mode Dispersion			0.2	ps
Return Loss	50			dB
Optical Power Handling		300		mW
Storage Temperature	-10		60	°C
Fiber Type	See order information			
Package Dimension	See Drawing for Mechanical Dimensions			

1. Excluding connectors.

Features

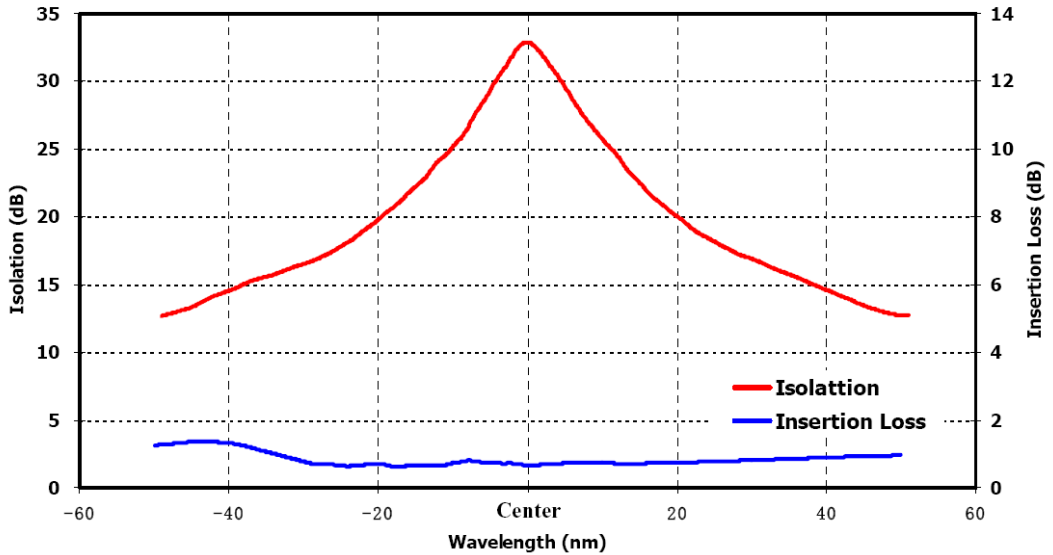
- Low Insertion Loss
- High Isolation
- Low PDL
- Both fibers on one side
- High Stability
- High Reliability
- Cost Effective

Applications

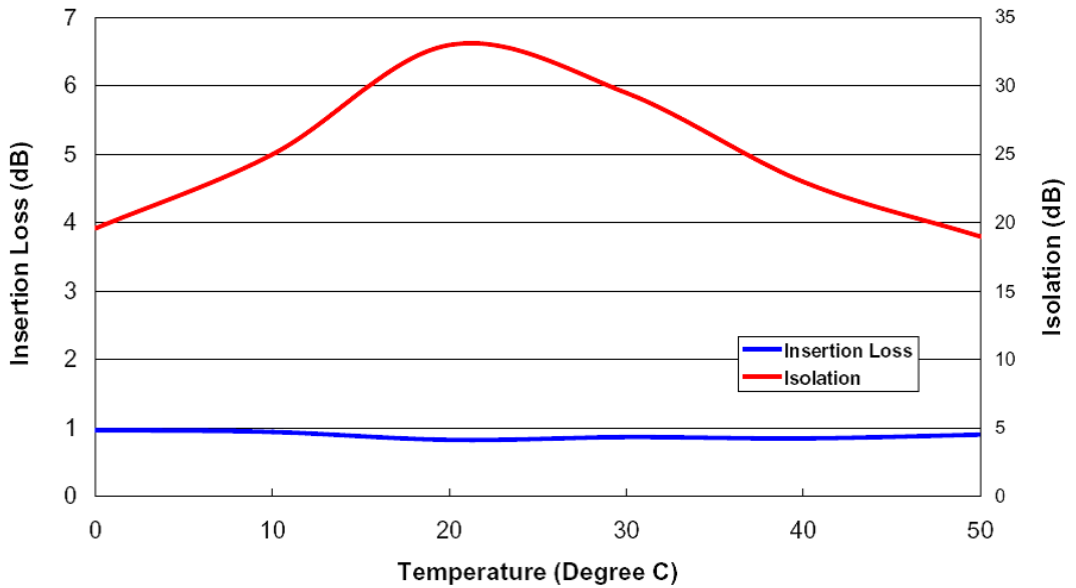
- Optical Fiber Amplifier
- Pump Laser Source
- Fiber Optic Sensor
- Test and Measurement
- Instrumentation

Mini 980/1060 Optical Isolator (Reflection)

Optical Performance

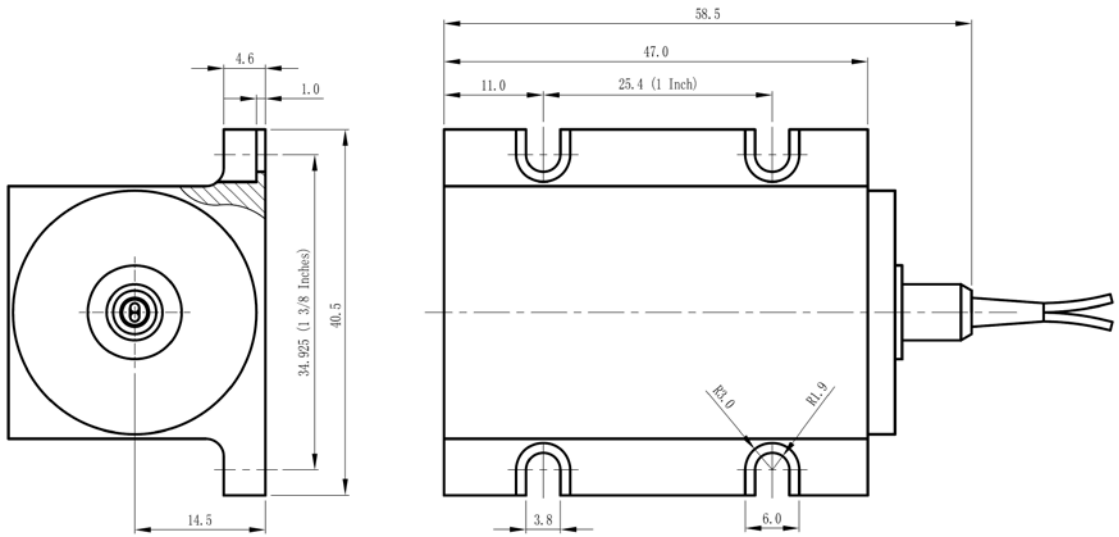


IL/Iso Vs. Temp @ Center Wavelength



Mini 980/1060 Optical Isolator (Reflection)

Mechanical Dimensions: Unit: mm



Ordering Information

OIST-	<input type="checkbox"/>	<input type="checkbox"/>	<input type="checkbox"/>	<input type="checkbox"/>	3	<input type="checkbox"/>	<input type="checkbox"/>	<input type="checkbox"/>	<input type="checkbox"/>	
Type	Wavelength	Grade	Package	Fiber Type	Fiber Length	Connector				
Polarization Independent=11 Special=10	1060=1 980=9 Special=0	Standard=1 Special=0	Reflection=3	HI1060=2 HI980=9 Special =0	Bare fiber=1 900um Loose tube=3 Special=0	0.25M=1 0.5M=2 1.0M=3 Special=0	None=1 FC/PC=2 FC/APC=3 SC/PC=4 SC/APC=5 ST/PC=6 LC=7 Special=0			