

Optical Switch Evaluation Kit Circuit Board and Software (MEMS)



(Protected by U.S. patent 6823102 and pending patents)

DATASHEET

BUY NOW



The SW-DR-3 optical switch evaluation kit is comprised of an evaluation board, software, a power supply, and a computer interface cable. The evaluation board integrates standard RS232 port or USB based virtual COM port plus TTL interfaces, allowing the user to easily create flexible and customized control logic configurations. It features real time control and supports Agiltron MEMSLatch™) 1X4 and 1x8 switches, 1x2/2x2 switches will be supported on next version. A user-friendly Windows™ application program is included for multi-purpose switch testing and demonstration.

The standard driver controls one individual switch. Drivers that control multiple switches also are available, please call Sales at (781) 935-1200 for more information.

Features

- USB
- RS232
- Push Button
- TTL
- GUI

RS232



USB(VCP)



Compatibility

- MEMS-1x4, 1x8, 1x12 & 1x16

Electrical Specifications

Parameter	Min	Typical	Max	Unit	Notes
Independent Control Channels	1		8		
Switching Peak Current			1.5	A	12V Supply voltage
Sustainable Switching Current			0.4	A	Average switching current, continuous repetition, 12V Supply voltage
Output Pulse Width	8		15	ms	Driving pulse duration, software adjustable
Power Supply Voltage	5.0	12.0	16.0*	V	
Power Supply Current (No Switching)			50	mA	Hot pluggable. <1.5A inrush current
RS232	-5.2V		+5.2V	V	Pin 2 and 3 crossover cable
TTL Interface	Compatible with Standard TTL Logic Level				
Electrical Connector Type	Male DB9 / USB B-type(VCP)				
Board Dimension	(L)60mm x (W)60mm x (H)15mm				

* Over this value will damage the device

Warning: This device must use the reference circuit to driver otherwise it is unstable.

Legal notices: All product information is believed to be accurate and is subject to change without notice. Information contained herein shall legally bind Agiltron only if it is specifically incorporated into the terms and conditions of a sales agreement. Some specific combinations of options may not be available. The user assumes all risks and liability whatsoever in connection with the use of a product or its application.

Rev 11/13/23

Optical Switch Evaluation Kit Circuit Board and Software (MEMS)



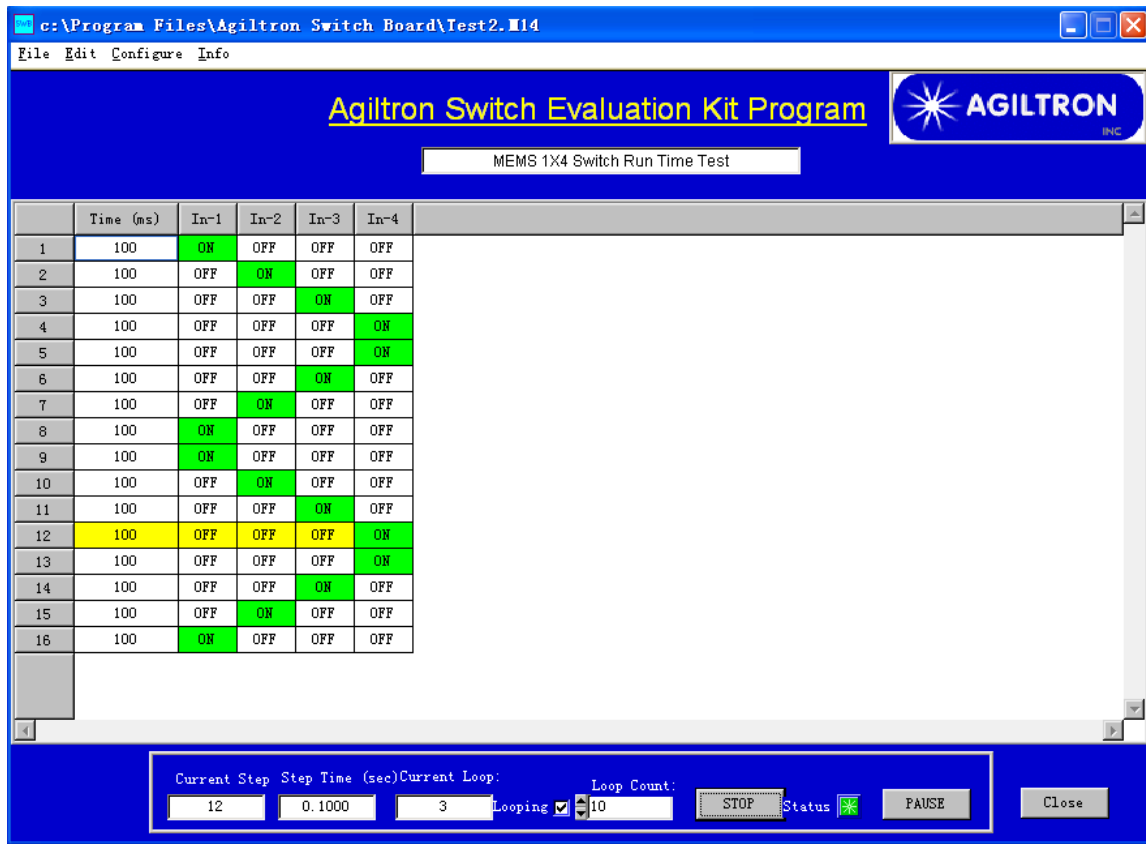
(Protected by U.S. patent 6823102 and pending patents)

DATASHEET

Control Modes

RS232 / VCP Control	For customized software development utilizing Command/ Response format interface. Also used with the supplied Windows™-compatible software for switch configuration and programmable run time testing.
TTL Control	Standard TTL logic level with TTL logic timing diagram. TTL emulating DIP switches are available on the circuit board.

Graphic Example (1x4)



Ordering Information

Prefix	Switch Type	Function	Size (mm)	# of Switch	Control Mode
SWDR-	MEMS switch = 44	1x1 = 11 1x2 = 12 2x1 = 21 1x4 = 14 4x1 = 41 1x8 = 18 8x1 = 81 Special = 00	60x60x15 = 1 Special = 0	1 switch = 11 2 switches = 22 3 switches = 33 ... 9 switches = 99 Special = 0	RS232 & TTL = 1 USB(VCP) & TTL = 2 Special = 0

Optical Switch Evaluation Kit Circuit Board and Software (MEMS)

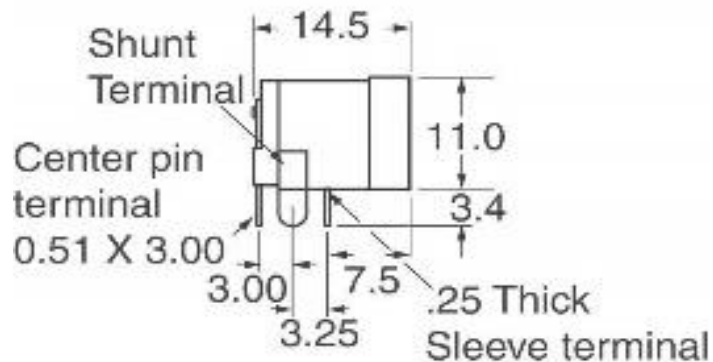


(Protected by U.S. patent 6823102 and pending patents)

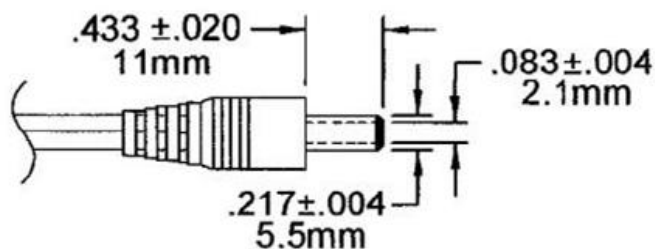
DATASHEET

Power Connector

P/N:
Power Barrel Connector Jack 2.00mm ID (0.079"),
5.50mm OD (0.217") Through Hole, Right Angle



12V Wall Plug DC Power Supply Interface



*Product dimensions may change without notice. This is sometimes required for non-standard specifications.